



UG Dynamic Managed Accounts

Introduction:

Our team concentrates on the opportunities where we do both fundamental and technical analysis to take advantages on the profitable trading setups.

As we know, the main FOREX business feature is the Volatility within presenting a wide range of opportunities for profit, but this also comes with added risk.

Henceforth, our traders/EA Team and their managers do care about the major catalysts that should be put into consideration to protect the clients' funds and to create better trading environment as follows:

- Placing the stop-loss level in a proper way within 50 points; noting that, the risk versus reward shouldn't be less than 1 to 2 where we use some techniques to avoid huge movements negative effects.
- We average by doubling up the positions when we use more than 10% (15%) of the account balance as seen in our trading statements which we provide along with this file which clearly give evidence for how we calculate the positions quantity that fit the strategies when the positions sizes exceed 10% of the balance.

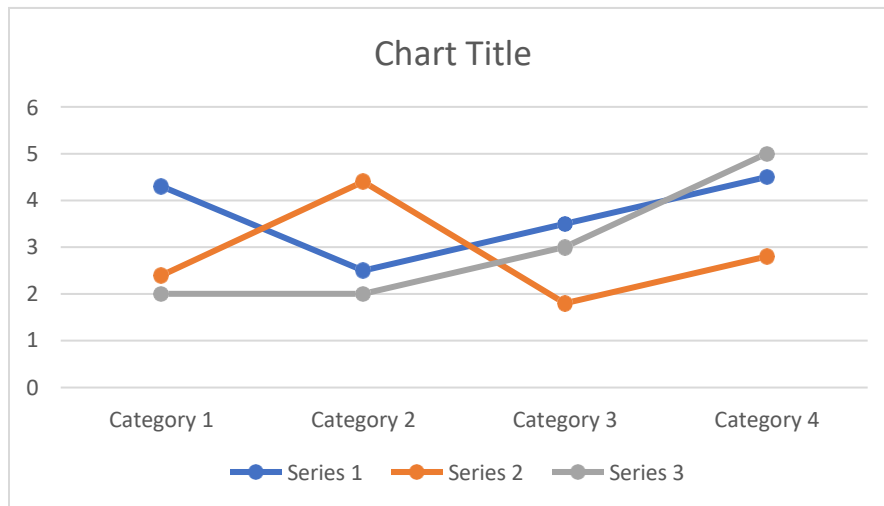
Risk Objective:

Capital preservation, protection and increasing the trading desk are our main goals and that is done throughout accurate downside risk and efficient capital management.

Our Average and double up concept:

- Average -and-double up strategy involves two types of orders—an accurate direction of the market (Trend) and a bigger size position. What we mean by this strategy, when the market goes against our trend and corrects, we take a calculated double, and based on our analysis team and [the trading statements](#) I attached, you can clearly see how the performance was
- Hedging strategies when prices go against trader isn't acceptable.

Performance Chart



Trading Techniques:

Catching technical classical patterns and harmonic patterns, using support, resistance, supply, and demand areas to define the entry points

We use modern technical indicators depending on momentum and trend strength gauges to detect the accurate entry points and trend

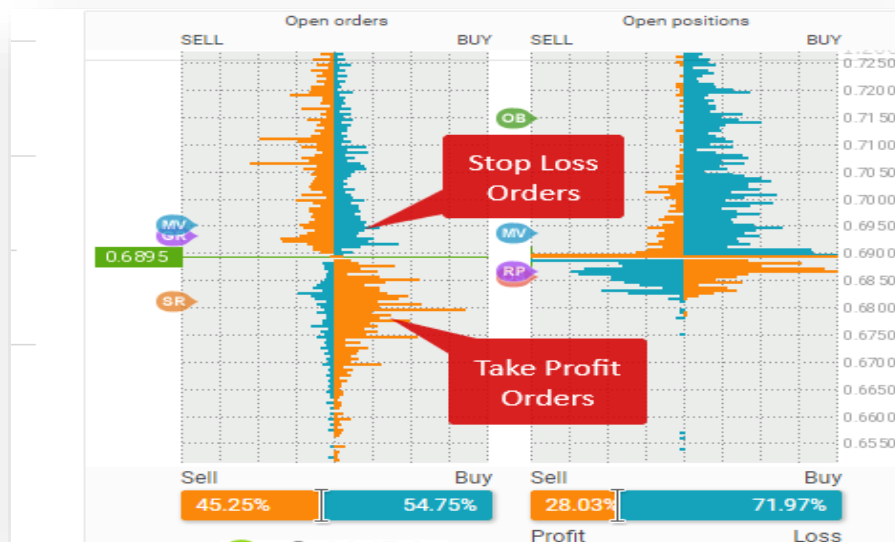
Trading allocation:



How and when we take profits:

- Ultimately, we may close any position before reaching targets or stop loss based on the market conditions and fundamental surprises.
- Taking profit level is placed based on technical studies where we use many analytical schools such as classic, harmonic, Elliott waves, mathematical measurements and Bullkowski's tactics.
- As per our trading statements, TP should be set at the level, which can be randomly touched by price even if you have opened a trade of the wrong direction.

- Unlike stop-losses, take-profits are set by almost all the traders due to a trading psychology; thus, it is very important to close most or all positions when we use 10% approximately of the available balance ahead of the market closings.



The image above shows the difference between stop loss and take profit orders in amount.

Of note, as a team if we collect data on the take-profits set by a great number of traders and draw the histogram showing the dependence of a certain price on the volume of Take-Profit Orders opened at the given price, we add this data to our analysis aspects to be able to define the TP in a proper way.

Performance fee: 35%
 For more information
 Send email to: support@uginvestmentgroup.com
 Tel: 0097145689825

Risk Disclaimer: The document is provided for information purpose only and should not be interpreted as investment advice. Any offering is made solely on the basis of the relevant managed account and the appropriate subscription/ application forms. An investment in an alternative investment carries substantial risks. The nature and extent of some of these risks differ from traditional investments in stocks and bonds. Shares in the Fund should therefore be purchased only by persons with knowledge and experience of investing in such alternative investment schemes. There can be no assurance that the advice or information provided above will lead to superior performance. In particular, the performance of an alternative investment may vary substantially over time. It should be noted that the account value used above is for demonstration purposes although the performance values are absolute.